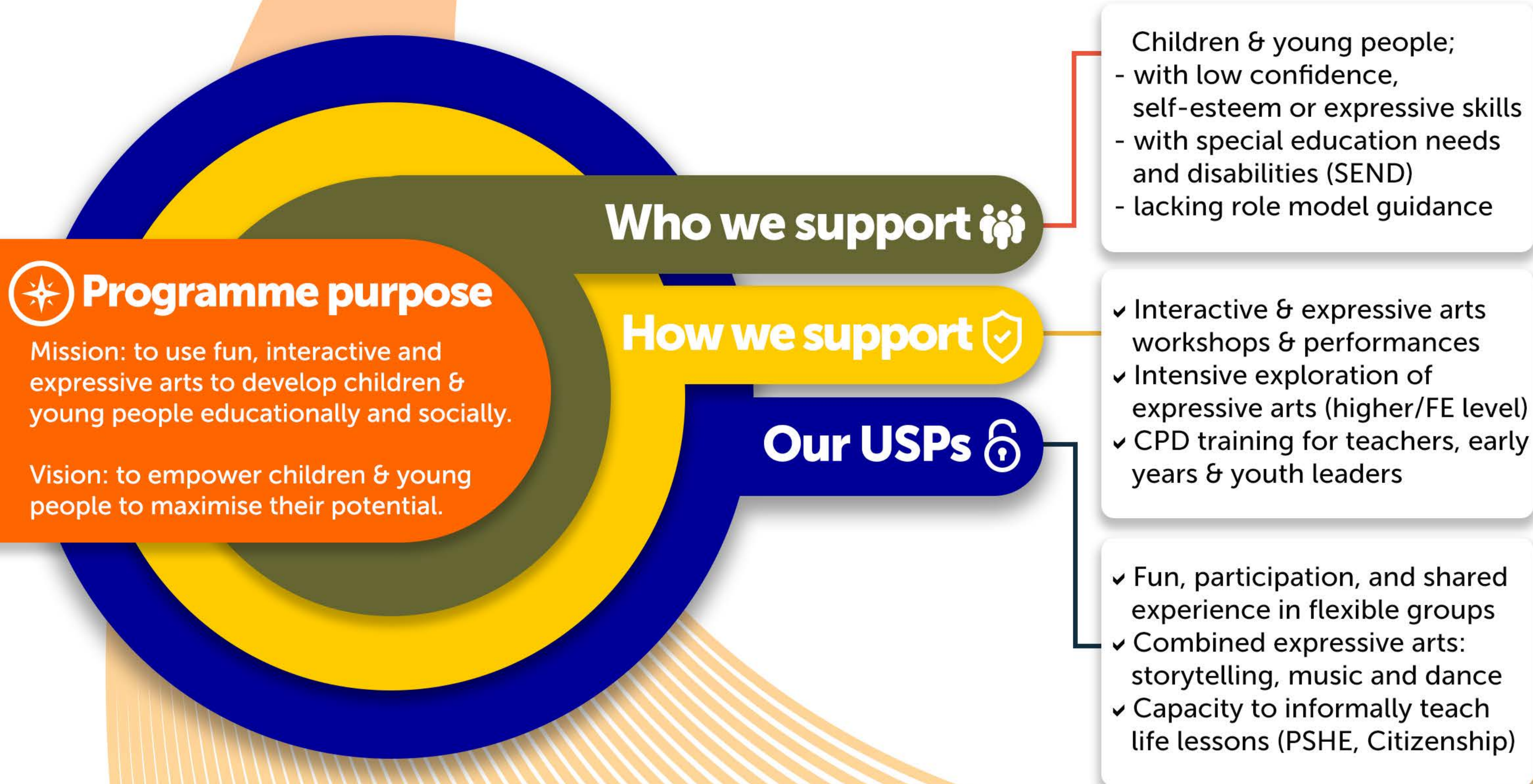


IROKO Edutainment Programme

Impact Map



Programme purpose
 Mission: to use fun, interactive and expressive arts to develop children & young people educationally and socially.
 Vision: to empower children & young people to maximise their potential.

Who we support 👥

- Children & young people;
- with low confidence, self-esteem or expressive skills
- with special education needs and disabilities (SEND)
- lacking role model guidance

How we support 🛡️

- ✓ Interactive & expressive arts workshops & performances
- ✓ Intensive exploration of expressive arts (higher/FE level)
- ✓ CPD training for teachers, early years & youth leaders

Our USPs 🔒

- ✓ Fun, participation, and shared experience in flexible groups
- ✓ Combined expressive arts: storytelling, music and dance
- ✓ Capacity to informally teach life lessons (PSHE, Citizenship)

📍 Outcome journey

Short term	Intermediate	Long term
<ul style="list-style-type: none"> ✓ Have fun learning & participating in new activities ✓ Interact with new diverse peer groups ✓ Gain access to positive BAME role models 	<ul style="list-style-type: none"> ✓ Enhanced inter-personal skills ✓ Increased social confidence and diversity of social networks ✓ Hear and embrace new or previously uninteresting moral messages 	<ul style="list-style-type: none"> ✓ Increased aspiration to try new things ✓ Increased self-esteem, and personal well-being ✓ Increased understanding of others and their cultures

★ Wider impact

- | | |
|---|---|
| <p>For schools, teachers & youth leaders:</p> <ul style="list-style-type: none"> ✓ Increased repertoire of PSHE education methods ✓ Enhanced cohesion amongst diverse peer groups | <p>For communities:</p> <ul style="list-style-type: none"> ✓ Increased understanding of different cultures ✓ Increased community cohesion |
|---|---|

Values ✓ Integrity ✓ Professionalism ✓ Passion ✓ Equality ✓ Diversity